

Joint Release

To Members of the Press

June 3, 2025

ANA FACILITIES CO.,LTD.

Peach Aviation Limited

ANA Facilities Collaborates with Peach Launch of Business Jet Hangar Operations at Kansai Airport

Making effective use of vacant hangar space to solve the problem of insufficient parking for business jets

- ANA Facilities, in collaboration with Peach, will start a new business jet hangar operation at Kansai Airport.
- With a shortage of hangars within Japan, operating a hangar in the major city of Osaka will solve the parking space shortage issue for business jet operators and owners.
- By combining the real estate management business provided by ANA Facilities with the air services provided by Peach, we offer optimal services and rates, expanding our customers' options for their activity hubs.



Osaka, June 3, 2025 - Peach Aviation Limited ("Peach"; Headquarters: Sennan-gun, Osaka; Representative Director and CEO: Kazunari Ohashi) is collaborating with ANA FACILITIES CO.,LTD. ("ANA Facilities"; Headquarters: Chuo ku Tokyo; President and Representative Director: Hiroyuki Kondo), which develops real estate business within the ANA Group, to start a business jet hangar project at Kansai Airport ("this project").

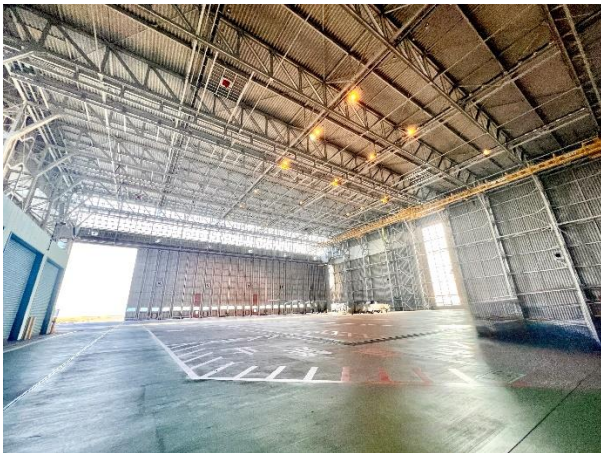
■ About this Project

This is a service in which ANA Facilities manages and operates hangar space leased by Peach from AIRPORT FACILITIES CO.,LTD. (Headquarters: Ota ku, Tokyo, President and CEO: Shigeo Tamura) within Kansai Airport, providing the available space mainly to business jet operators and business jet owners.

Our flexible rental solutions span from one-day short-term use to long-term monthly engagements. ^{*1} The hangar will be available for your use whenever you're in Kansai region. ^{*2}

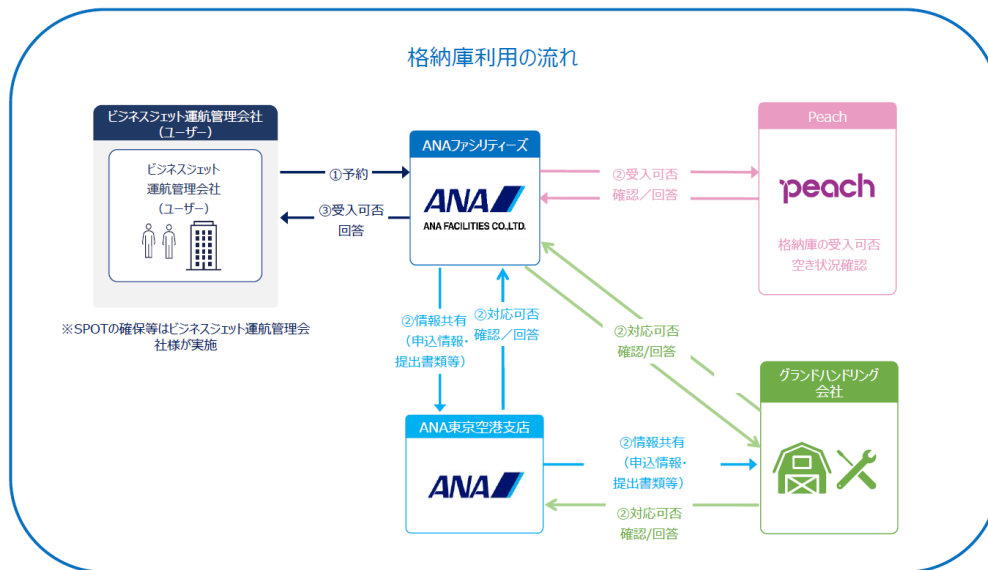
[Property Overview]

- ◆ Facility Name: Kansai Airport Hangar
- ◆ Location: Sennan-shi, Osaka
- ◆ Completion Date: March 31, 2002
- ◆ Total Floor Area: 8,501.24 m² (2,435.50 tsubo)
- ◆ Usable Area: Approximately 2,520 m² (approximately 764.65 tsubo)
- ◆ Facade: Vertical 22.75 m x Horizontal 91 m
- ◆ Structure: Steel frame construction
- ◆ Usage: Parking for business jets, etc.



■ Advantages of Parking at Kansai Airport

Since Kansai Airport is an offshore airport, there are few noise restrictions, allowing it to operate 24 hours a day^{*3}. Additionally, the airport is easily accessible thanks to direct connections to railway lines and highways (such as the Hanshin Expressway Bayshore Route, the JR Kansai Airport Line, and the Nankai Electric Railway Airport Line), and the relatively short distance to major destinations in Asia (approximately 860 km to Seoul in about 1 hour and 30 minutes, etc.) makes it an ideal solution for business jet operators and owners who struggle with aircraft parking space shortages and lack of access to major cities.



*1 We will provide individual proposals for parking fees based on the type of aircraft, days of use, etc.

For inquiries about service details and availability, please see the contact information below.

*2 It will be necessary to confirm hangar space availability with ANA Facilities and Peach on each occasion, including the purpose of use, area required, etc. Please be aware that we may not be able to provide service depending on the purpose of use or availability of the space.

*3 Please be aware that there are time periods (20:00-6:00) when docking in and out may be unavailable.

ANA Facilities and Peach aim to enhance the functionality and value of Kansai Airport as a business hub through this project.

■About Peach

Peach began operations from Kansai Airport on March 1, 2012 and currently services 25 domestic routes and 15 international routes. Peach's Corporate Philosophy consists of "serving as a bridge for Asia, promoting the exchange of ideas, information, and cultural understanding between people". We put safety first and pursue basic quality while connecting countries and regions with each other, and we aim to provide a carefree way to travel and to always be by the side of the customers we serve. Going forward, we will continue to grow and evolve under the vision of "A flight full of respect for everyone".

[Company Overview]

Company Name: Peach Aviation Limited

President: Kazunari Ohashi, Representative Director & CEO

Founded: February 10, 2011

Head Office: 1 Senshu-kuko-kita Izumisano shi, Osaka, Japan

Scope of Business: Air transportation business (domestic/international)

Website: <https://www.flypeach.com/en/corporate>

■ About ANA Facilities

ANA Facilities offers customers a wide range of services including real estate business (asset management investment, subleasing/property management, real estate sales and brokerage, rental apartment development/management, and other personal real estate services such as bank agency), facility management, and insurance agency services.

They provide maximized tangible value for stakeholders and create new value ahead of the times through real estate and insurance services, which is made possible by being part of the ANA Group.

[Company Overview]

Company Name: ANA FACILITIES CO.,LTD.

Representative: Hiroyuki Kondo, President and Representative Director

Founded: August 1, 1961

Incorporated: December 2, 2005

Head Office: Front Place Nihonbashi, 2-14-1 Nihonbashi, Chuo ku, Tokyo, Japan

Scope of Business: Real estate, facility management, insurance

Website: <https://www.anaf.co.jp/>

[Contact Information]

For customer inquiries: Please contact ANA Facilities via email (anafbj-dc@anaf.co.jp) or telephone (03-6625-8220).